

ANTENNA TUNING UNITS

DESCRIPTION

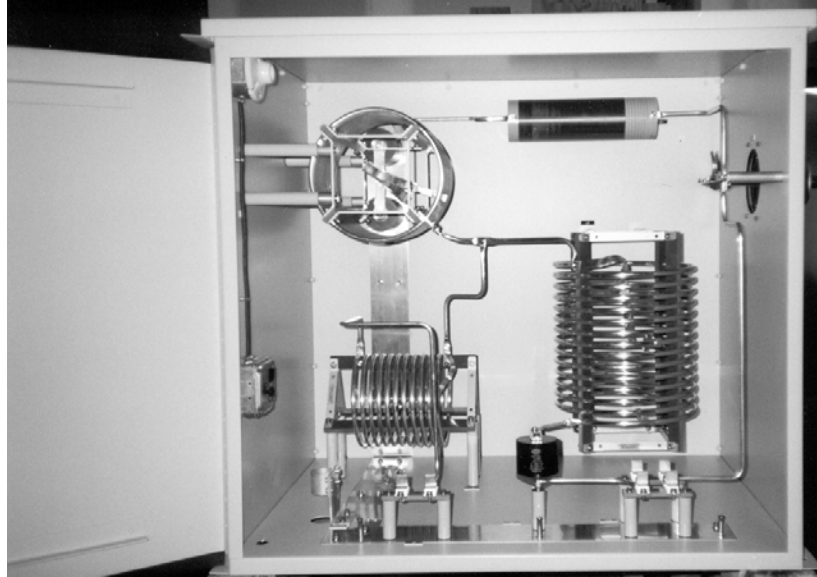
Phasetek Inc., tuning units are engineered and designed to provide the most efficient coupling between your transmitter and tower. All units feature rugged construction and high quality material and components to provide many years of dependable, maintenance free operation.

Standard units are enclosed in aluminum weatherproof cabinets with rear and base mounting flanges, hinged locking door (s) and have gold anodyne/Phasetek gray finish. All units have a 3 foot pigtail of copper strap for connection to station ground. A wide tuning range and bandwidth is designed into all matching networks for easy tune up.

STANDARD FEATURES

- * Weatherproof cabinet, open panel/shelf optional.
- * Phasetek, Inc. manufactured RF inductors and components.
- * Mica capacitors and /or vacuum capacitors.
- * Output bowl feed thru assembly with arc gap.
- * Static drain choke, lightning choke optional.
- * Input test jack and dual output jacks with plug-in ammeter.
- * Ample room for Impedance Bridge at test jacks with ground posts/shelf provided.
- * Input transmission line clamp.
- * Service light and duplex receptacles.
- * All grounding directly to copper ground strap buss.
- * All component ratings are at least 1.8 times the calculated RMS current and at least 4.0 times the calculated RMS voltage.

STANDARD ANTENNA TUNING UNITS



Standard Antenna Tuning Units are designed to match 50ohm coaxial cable to a series fed, uniform cross section, guyed tower, 80 to 100 degrees tall. Consult the factory for pricing on units to match other antenna heights and for types.

PART # (SERIES FEED)	PART # (SHUNT FEED)	INPUT POWER
P600-210-500	P600-210-500	500 WATTS
P600-210-1K	P600-210-1k-SH	1,000 WATTS
P600-210-2.5K	P600-210-2.5k-SH	2,500 WATTS
P600-210-5K	P600-210-5k-SH	5,000 WATTS
P600-210-10K	P600-210-10k-SH	10,000 WATTS
P600-210-25K	P600-210-25k-SH	25,000 WATTS
P600-210-50K	P600-210-50k-SH	50,000 WATTS

When ordering, please specify the following:

1. Frequency.
2. Tower height and type.
3. Input coax size and type.
4. Any additional requirements or options.
5. Add "OP" to part number for open panel shelf units.